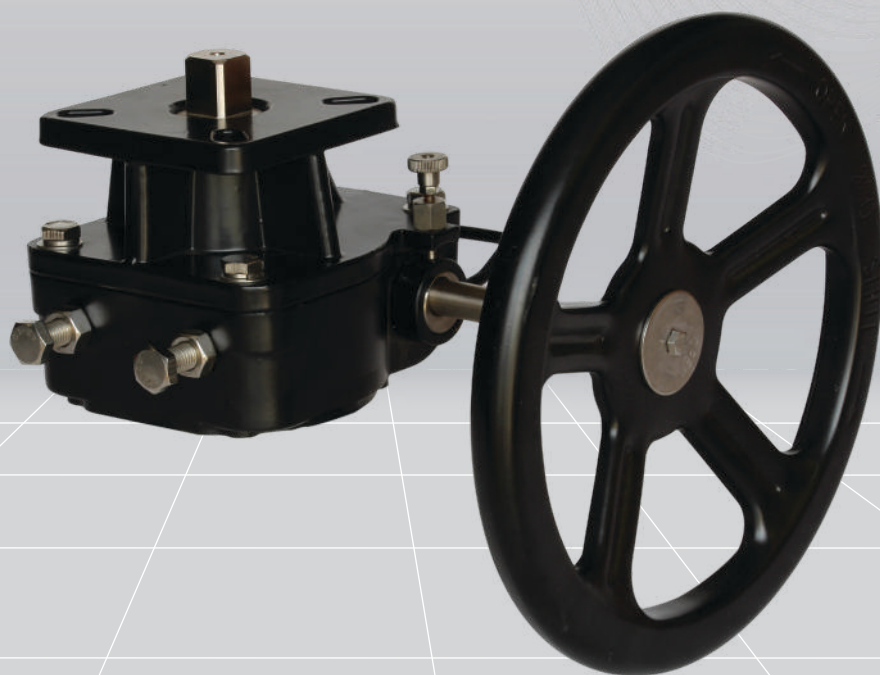




DE-CLUTCHABLE MANUAL OVERRIDE

EDG SERIES



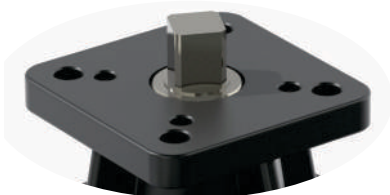
ELGER CONTROLS

We, at ELGER CONTROLS offer products & solutions to effectively meet the challenges of modern process control, for automation of final controls elements like valves & dampers. We are committed to provide robust and reliable actuators for every type of industry and every type of application. Our well established policies and procedures complying to ISO 9001:2015, ensure that the quality and reliability of our products and services meet customer and applicable statutory and regulatory requirements.

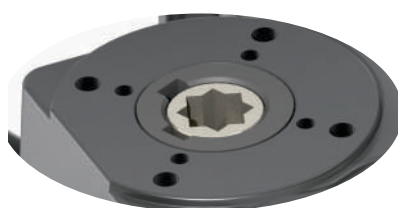


DESIGN FEATURES

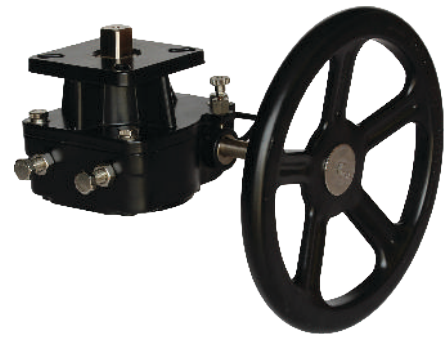
- Aluminum body LM 25 (Optional: DI/CI/SS)
(Upto 1000 Nm Aluminum body; above 1000 Nm Cast Iron body)
- Light in weight
- ISO 5211 mounting standard on top and bottom side
- In-built double square female shaft on valve integration side
- In-built square shaft on actuator integration side (As per ISO 5211)
- Enclosure : IP 65
- Temperature range : -20° C to +80° C
- Rotation 0~90°(± 5° Adjustable)
- All the fasteners used in the products are SS
- Optional chain wheel operation available on request
- Manual override is supplied with finished powder coating (Optional: PU/Epoxy coating)



Mounting base actuator side



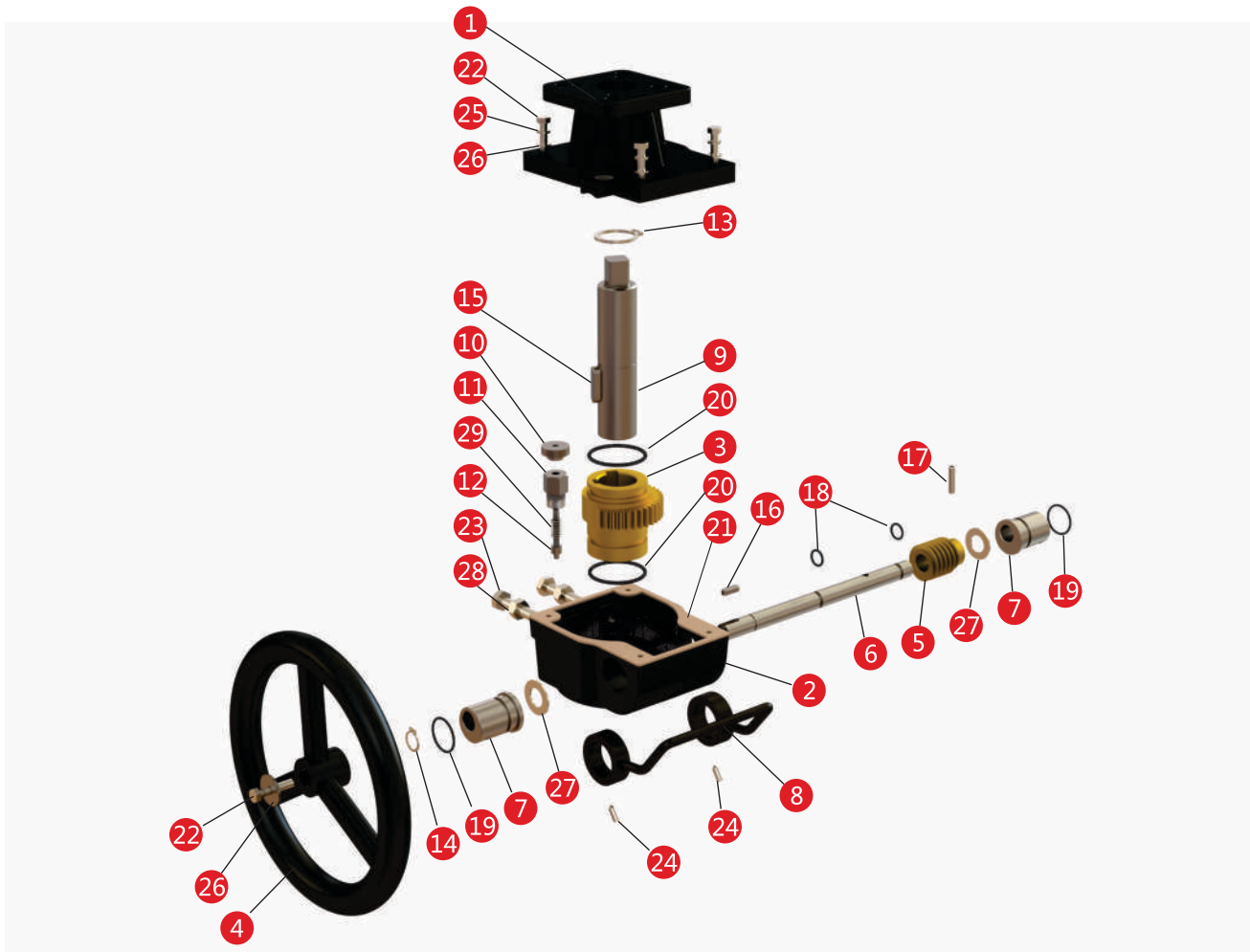
Mounting base valve side



EDG SERIES DE-CLUTCHABLE QUARTER-TURN MANUAL OVERRIDE

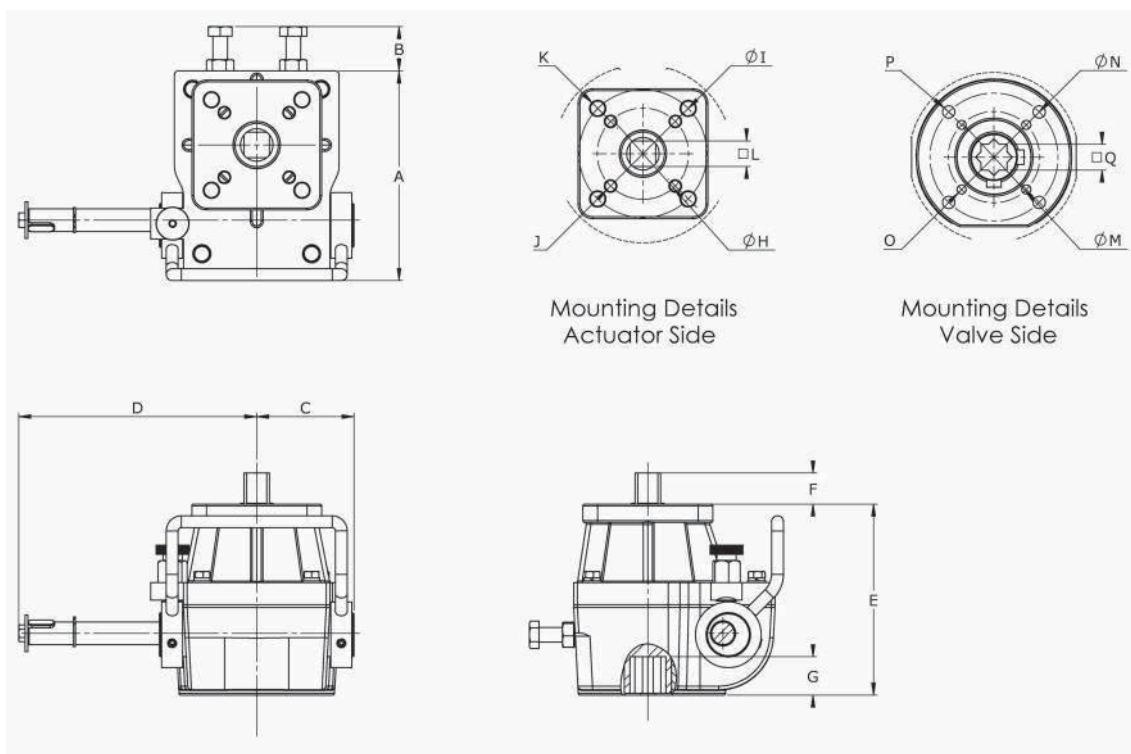
EDG series manual overrides are compact, lightweight and direct mounting part turn de-clutchable type. EDG series de-clutchable quarter-turn manual override prove to be cost effective solution for valve and pneumatic actuator application to use manual operation.





- | | | |
|---|--|--|
| 1 Enclosure - Top
Aluminum - LM 25 | 11 Auto/ Manual Locking Unit- Nut
Carbon Steel | 21 Gasket
Nitrile |
| 2 Enclosure - Bottom
Aluminum - LM 25 | 12 Auto/ Manual Locking Unit - Shaft
Carbon Steel | 22 Bolt
SS - 304 |
| 3 Worm Wheel
SG 500/7 | 13 Drive Shaft Circlip
Carbon Spring Steel | 23 Bolt
SS - 304 |
| 4 Hand Wheel
Aluminum - LM 25 / Carbon Steel | 14 Worm Shaft Circlip
Carbon Spring Steel | 24 Grub Screw
SS - 304 |
| 5 Worm Gear
EN - 8 | 15 Drive Shaft Key
EN - 8 | 25 Washer
SS - 304 |
| 6 Worm Shaft
EN - 8 | 16 Worm Shaft Key
EN - 8 | 26 Washer
SS - 304 |
| 7 Eccentric Bush
EN - 8 | 17 Spring Pin
High Carbon Steel | 27 Worm Gear Washer
Galvanized Iron |
| 8 De-Clutch Lever Assembly
EN - 8 | 18 O-ring
NBR | 28 Nut
SS - 304 |
| 9 Drive Shaft
EN - 8 | 19 O-ring
NBR | 29 Spring
SS - 304 |
| 10 Auto/ Manual Locking Unit-Knurling Nut
Carbon Steel | 20 O-ring
NBR | |

DIMENSION DETAILS



Model	EDG 1	EDG 2	EDG 3	EDG 4	EDG 5	EDG 6	EDG 7
Ratio	38:1	38:1	36:1	52:1	80:1	78:1	90:1
Rated Output Torque in Nm	100	215	425	1000	2000	3500	4200
No of Handwheel rotation for 90°	9.5	9.25	9	13	20	19.5	22.5
A	123	149	168	212	270	318	386
B	20	24	32	38	38	40	40
C	55	64	71	94	117	120	160
D	130	152	194	242	298	334	440
E	107	113	129	170	176	186	190
H	F 05	F 07	F 10	F 12	F 14	–	–
I	F 07	F 10	F 12	F 14	F 16	F 16	F 20
□L	14	17	22	27	36	46	55
F	13	18	23	28	37	48	53
M	F 05	F 07	F 10 or 12	F 14	F 14 or 16	F 16	F 20
N	F 07	F 10		–		–	–
□Q	14	17	22	27	36	46	55
G	20	23	28	34	42	48	56
Handwheel dia in mm	180	200	280	300	400	500	600
Weight in kg (without Hand Wheel)	2.3	3.5	5.3	12.3	30	42	65

Note : * Upto 1000 Nm Aluminum body

* Above 1000 Nm Cast Iron body

elGerTM
www.elgercontrols.com



ELGER CONTROLS INDIA PVT LTD

No.106, Shed No. 3, SIDCO Industrial Estate,
Malumichampatty, Coimbatore - 641 050,
Tamilnadu, India.

Phone : +91 422 2655666

Email: sales@elgercontrols.com

Web : www.elgercontrols.com

The contents of this publication are presented for informational purposes only, and while effort has been made to ensure their accuracy, they are not to be construed as warranties or guarantees, expressed or implied, regarding the products or services described herein or their use or applicability. All product, product specifications and data are subject to change without notice to improve reliability, function or design or otherwise.

S-EDG-180002-Y-001